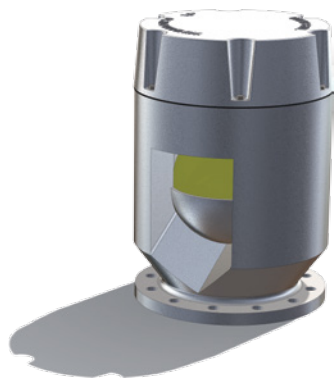


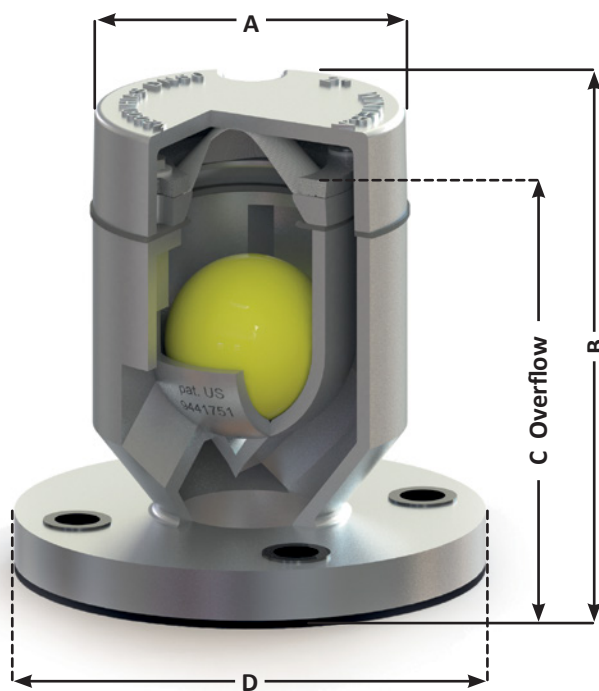
The world's largest producer of seawater resistant aluminium air pipe heads
 Innovative and high quality products

WINTEB BV PROUDLY PRESENTS:
 The **High Inlet Air Speed Execution**
HIAS



The patented HIAS technology has significantly increased the maximum inlet air speed. Especially designed for stability tanks and anti-heeling tanks.

WIN2000 HIAS is certified as watertight, according to IMO3573 regulations



WIN2000 HIAS WITH SCREEN
 (screen is optional)

Options:

1. Closing device*
 2. Screen*
 3. Threaded connection, only for aluminium pipes.
 4. Powder (epoxy) coating
 5. Sounding pipe
 6. Small flange connection
 7. Sounding pipe
 8. Victaulic connection
- *Either option 1 or 2 (Closing device or screen)

NB: Sizes DN300-DN500 are supplied with lifting eye (not with closing device)



	DN50 (2")	DN65 (2½")	DN80 (3")	DN100 (4")	DN125 (5")	DN150 (6")	DN175 (7")	DN200 (8")	DN250 (10")	DN300 (12")	DN350 (14")	DN400 (16")	DN450 (18")	DN500 (20")
A (mm)	Ø110	Ø130	Ø160	Ø195	Ø233	Ø275	Ø275	Ø338	Ø442	Ø560	Ø645	Ø728	Ø740	Ø887
B ±2.5 (mm)	169	203	235	272	321	380	380	481	595	774	840	945	1110	1148
C Overflow (with screen) (mm)	147	180	194	238	270	323	323	395	495	620	705	779	925	873
D	Flange connection according to any standard													
Ball diameter (mm)	Ø60	Ø75	Ø90	Ø105	Ø130	Ø155	Ø155	Ø200	Ø250	Ø325	Ø360	Ø400	Ø480	Ø530
Weight (kg)	2	2.75	4	6.5	9	13	14	20	32	63	88	114	134	180
Flow rate at 0,25 bar (m3/h)**	19	28	46	73	114	182	210	325	469	850	1025	1300	1490	2150
Flow rate at 0,25 bar (m3/h)***	18	25	42	68	101	169	195	279	443	805	925	1175	1375	1925
Max. inlet air speed (m/s)	17	17,5	38	58	59	42	42	27	15	39	36	27	34	29
Inlet air flow rate at max inlet air speed (m3/h)	135	209	612	1620	2590	2700	2700	3060	2700	9900	12240	12060	19080	20880

** Please note that these values correspond with the WIN2000 HIAS **without screen**, flowrate is with water being pumped through the air pipe head.

*** Please note that these values correspond with the WIN2000 HIAS **with screen mesh 18**, flowrate is with water being pumped through the air pipe head.

This information is not to be considered exhaustive. The content of this publication is of general and informative nature and is not meant as (technical) advice for product or usage purposes. No rights are to be derived from this information.

Made of seawater resistant Aluminium EN1706 | Non corroding | Maintenance free | Smallest design available
 No suction blocking | Cost saving | light weight = less fuel = less CO2 emission | Approved by all major classification societies

WIN2000 HIAS AIR PIPE HEADS: PRESSURE DROP VS. FLOW RATE CHARACTERISTICS

According to classification societies the air pipe head characteristic curves are to be taken into consideration at the design stage of the ballast system. Flowrate in m³/h

